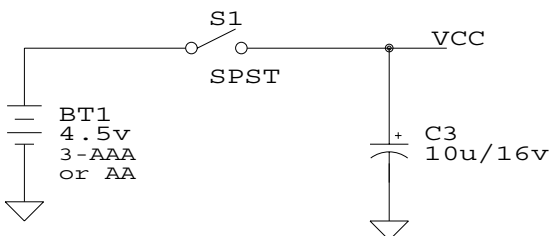
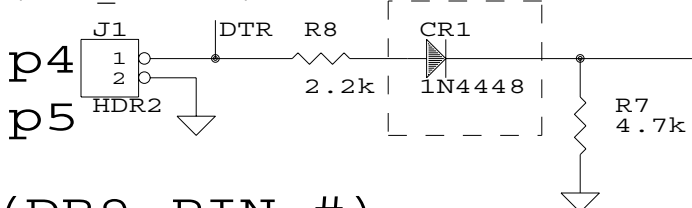


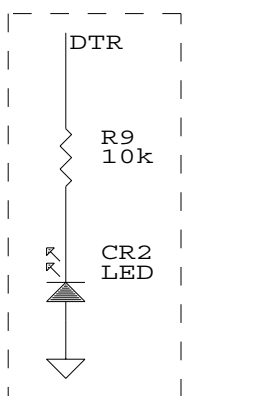
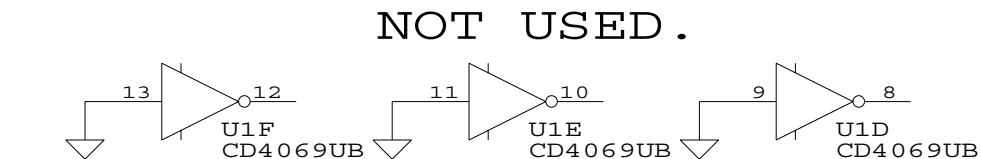
On only long enough to set clock.



SERIAL PORT FROM PC. (dcf1_sds.exe)
Delete if using logic levels.



DCF77 in Germany uses a 77.5kHz carrier with an amplitude modulated lpps code. A '0' is transmitted by lowering the carrier amplitude to 20% of the original value for 100ms and a '1' is transmitted by lowering the amplitude for 200ms.



PC DRIVEN AND SIMPLIFIED.
DEC 2009.

dcf77_m2.sch

Copyright 2010 Steven D. Swift, P.E. Seattle, Washington 98155 USA		
Proprietary Information		
Title DCF77 Simulator, Mark 2.		
Size A	Document Number	REV M2
Date: December 8, 2009	Sheet	1 of 1